

**Emogradnja doo**

+38118573344  
+381648550410

# **Izvestaj o snimanju elektro razvodnog ormara RO-MS termovizijskom kamerom Fluke Ti9**

---

***British American Tobacco Vranje Serbia,  
Objekat 14***

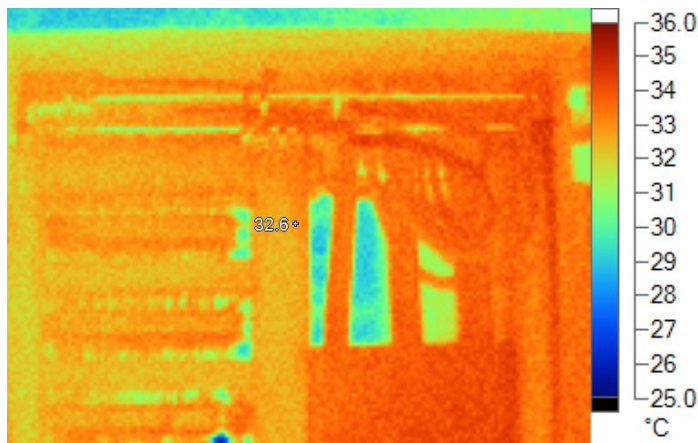
---

*Prepared for:*

**Goran Ristic**  
+38163486368

Inspected By:

Inspection Date:	8/29/2011 8:55:33 AM	Location	
Equipment		Equipment Name:	
Ambient Air Temp:		Wind Speed	
Load (%)		Max Rated Load:	
Exception Temperature:		Potential Problem	
Recommended Action		Repair Priority:	
Emissivity:	0.95	Reflected Temperature:	22.0 °C
Camera Manufacturer	Fluke	Camera:	Ti9-11060227



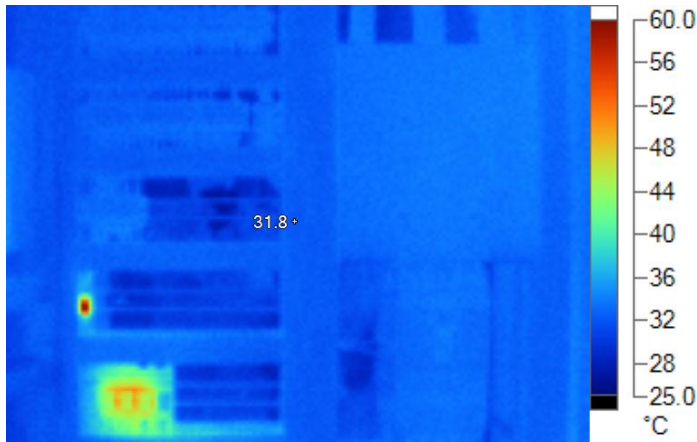
IR000015.IS2

**Image Info**

Transmission	1.00
Average Temperature	32.7°C
Image Range	26.0°C to 35.0°C
Camera Model	Ti9
Image Time	8/29/2011 8:55:33 AM
Calibration Range	-25.0°C to 125.0°C

Inspected By:

Inspection Date:	8/29/2011 8:56:05 AM	Location	
Equipment		Equipment Name:	
Ambient Air Temp:		Wind Speed	
Load (%)		Max Rated Load:	
Exception Temperature:		Potential Problem	
Recommended Action		Repair Priority:	
Emissivity:	0.95	Reflected Temperature:	22.0 °C
Camera Manufacturer	Fluke	Camera:	Ti9-11060227



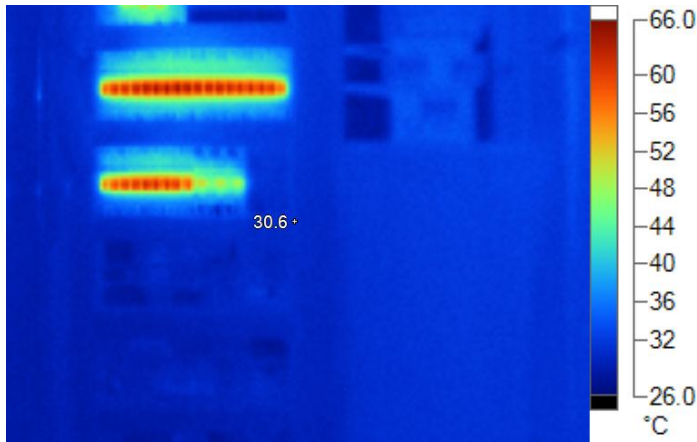
IR000016.IS2

**Image Info**

Transmission	1.00
Average Temperature	32.7°C
Image Range	26.7°C to 58.8°C
Camera Model	Ti9
Image Time	8/29/2011 8:56:05 AM
Calibration Range	-25.0°C to 125.0°C

Inspected By:

Inspection Date:	8/29/2011 8:56:35 AM	Location	
Equipment		Equipment Name:	
Ambient Air Temp:		Wind Speed	
Load (%)		Max Rated Load:	
Exception Temperature:		Potential Problem	
Recommended Action		Repair Priority:	
Emissivity:	0.95	Reflected Temperature:	22.0 °C
Camera Manufacturer	Fluke	Camera:	Ti9-11060227



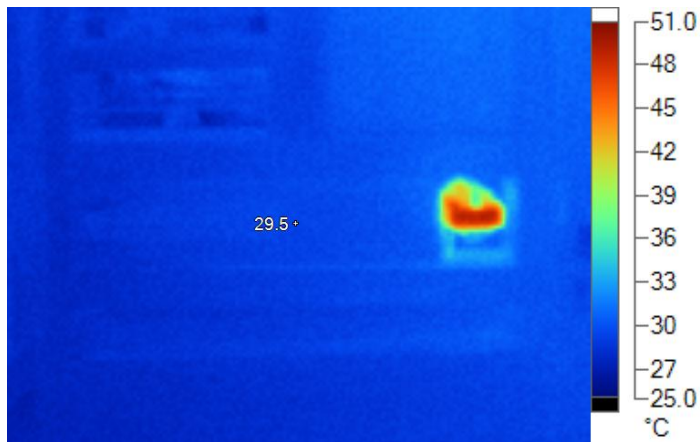
IR000017.IS2

**Image Info**

Transmission	1.00
Average Temperature	31.9°C
Image Range	27.2°C to 64.7°C
Camera Model	Ti9
Image Time	8/29/2011 8:56:35 AM
Calibration Range	-25.0°C to 125.0°C

Inspected By:

Inspection Date:	8/29/2011 8:56:57 AM	Location	
Equipment		Equipment Name:	
Ambient Air Temp:		Wind Speed	
Load (%)		Max Rated Load:	
Exception Temperature:		Potential Problem	
Recommended Action		Repair Priority:	
Emissivity:	0.95	Reflected Temperature:	22.0 °C
Camera Manufacturer	Fluke	Camera:	Ti9-11060227



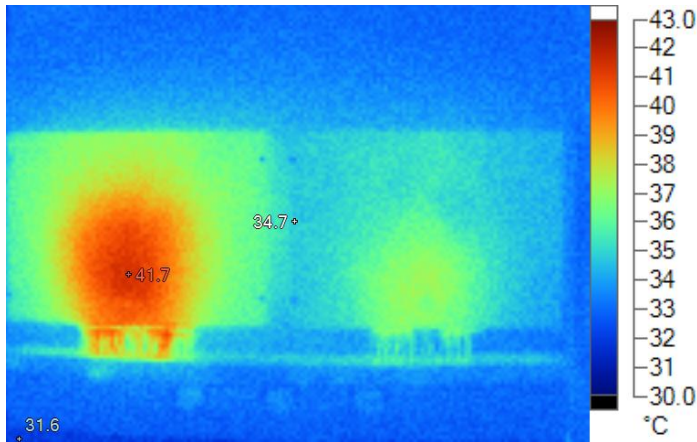
IR000018.IS2

**Image Info**

Transmission	1.00
Average Temperature	29.2°C
Image Range	26.3°C to 49.3°C
Camera Model	Ti9
Image Time	8/29/2011 8:56:57 AM
Calibration Range	-25.0°C to 125.0°C

Inspected By:

Inspection Date:	8/29/2011 8:59:01 AM	Location	
Equipment		Equipment Name:	
Ambient Air Temp:		Wind Speed	
Load (%)		Max Rated Load:	
Exception Temperature:		Potential Problem	
Recommended Action		Repair Priority:	
Emissivity:	0.95	Reflected Temperature:	22.0 °C
Camera Manufacturer	Fluke	Camera:	Ti9-11060227



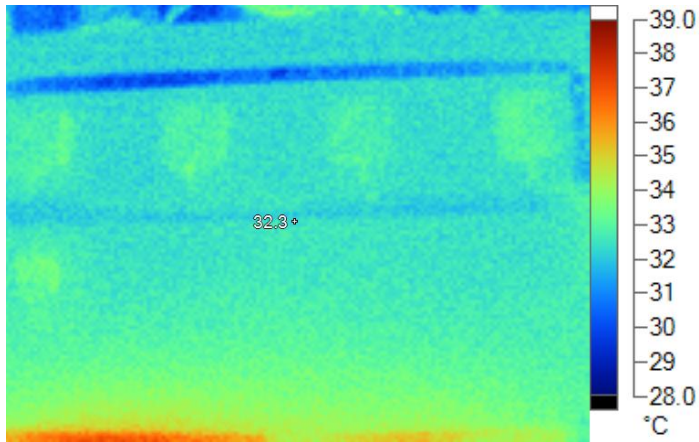
IR000019.IS2

**Image Info**

Transmission	1.00
Average Temperature	34.7°C
Image Range	31.6°C to 41.7°C
Camera Model	Ti9
Image Time	8/29/2011 8:59:01 AM
Calibration Range	-25.0°C to 125.0°C

Inspected By:

Inspection Date:	8/29/2011 8:59:17 AM	Location	
Equipment		Equipment Name:	
Ambient Air Temp:		Wind Speed	
Load (%)		Max Rated Load:	
Exception Temperature:		Potential Problem	
Recommended Action		Repair Priority:	
Emissivity:	0.95	Reflected Temperature:	22.0 °C
Camera Manufacturer	Fluke	Camera:	Ti9-11060227



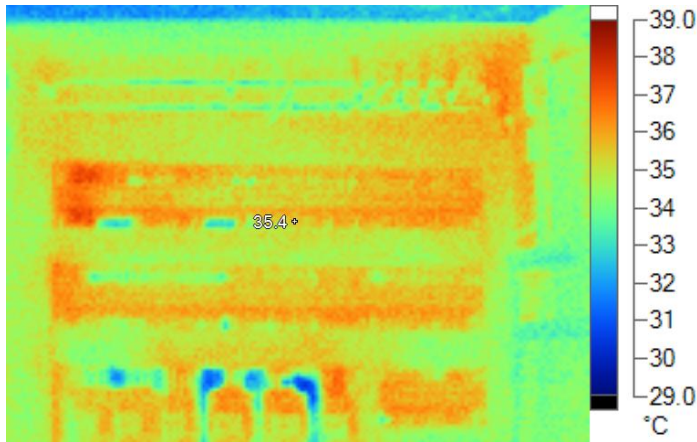
IR000020.IS2

**Image Info**

Transmission	1.00
Average Temperature	32.7°C
Image Range	29.4°C to 37.3°C
Camera Model	Ti9
Image Time	8/29/2011 8:59:17 AM
Calibration Range	-25.0°C to 125.0°C

Inspected By:

Inspection Date:	8/29/2011 9:00:04 AM	Location	
Equipment		Equipment Name:	
Ambient Air Temp:		Wind Speed	
Load (%)		Max Rated Load:	
Exception Temperature:		Potential Problem	
Recommended Action		Repair Priority:	
Emissivity:	0.95	Reflected Temperature:	22.0 °C
Camera Manufacturer	Fluke	Camera:	Ti9-11060227



IR000021.IS2

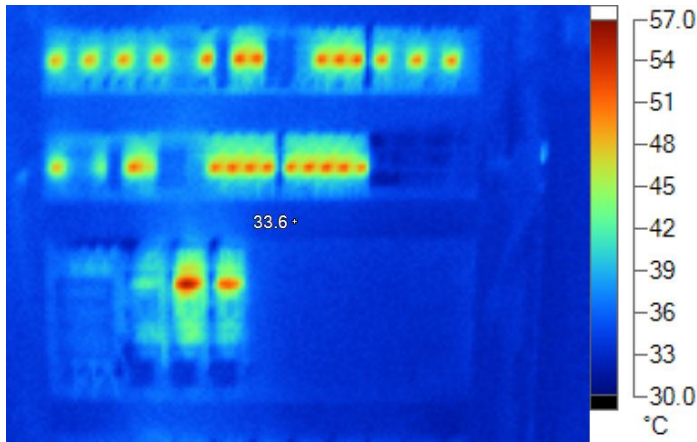
**Image Info**

Transmission	1.00
Average Temperature	34.9°C
Image Range	30.3°C to 37.6°C
Camera Model	Ti9
Image Time	8/29/2011 9:00:04 AM
Calibration Range	-25.0°C to 125.0°C

Inspected By:

Inspection Date:	8/29/2011 9:00:29 AM	Location	
Equipment		Equipment Name:	
Ambient Air Temp:		Wind Speed	
Load (%)		Max Rated Load:	
Exception Temperature:		Potential Problem	
Recommended Action		Repair Priority:	
Emissivity:	0.95	Reflected Temperature:	22.0 °C
Camera Manufacturer	Fluke	Camera:	Ti9-11060227





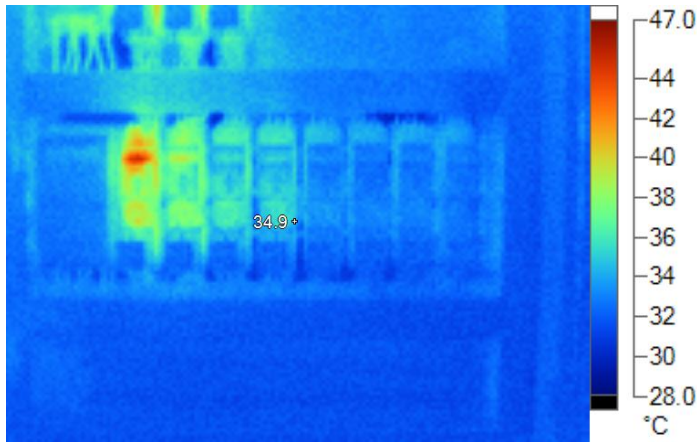
IR000022.IS2

**Image Info**

Transmission	1.00
Average Temperature	35.5°C
Image Range	31.2°C to 55.5°C
Camera Model	Ti9
Image Time	8/29/2011 9:00:29 AM
Calibration Range	-25.0°C to 125.0°C

Inspected By:

Inspection Date:	8/29/2011 9:00:56 AM	Location	
Equipment		Equipment Name:	
Ambient Air Temp:		Wind Speed	
Load (%)		Max Rated Load:	
Exception Temperature:		Potential Problem	
Recommended Action		Repair Priority:	
Emissivity:	0.95	Reflected Temperature:	22.0 °C
Camera Manufacturer	Fluke	Camera:	Ti9-11060227



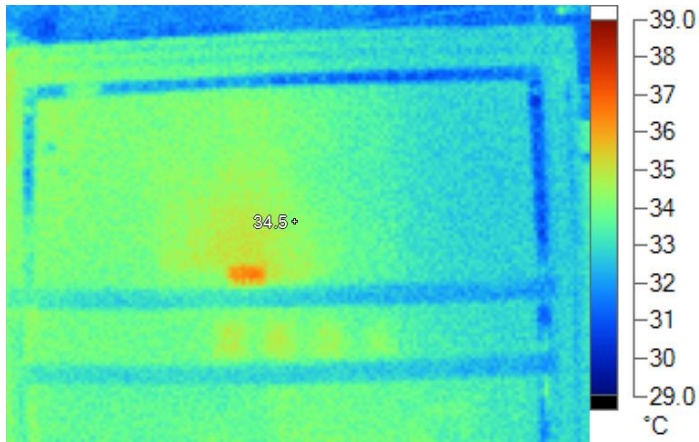
IR000023.IS2

**Image Info**

Transmission	1.00
Average Temperature	32.9°C
Image Range	29.7°C to 45.1°C
Camera Model	Ti9
Image Time	8/29/2011 9:00:56 AM
Calibration Range	-25.0°C to 125.0°C

Inspected By:

Inspection Date:	8/29/2011 9:01:39 AM	Location	
Equipment		Equipment Name:	
Ambient Air Temp:		Wind Speed	
Load (%)		Max Rated Load:	
Exception Temperature:		Potential Problem	
Recommended Action		Repair Priority:	
Emissivity:	0.95	Reflected Temperature:	22.0 °C
Camera Manufacturer	Fluke	Camera:	Ti9-11060227



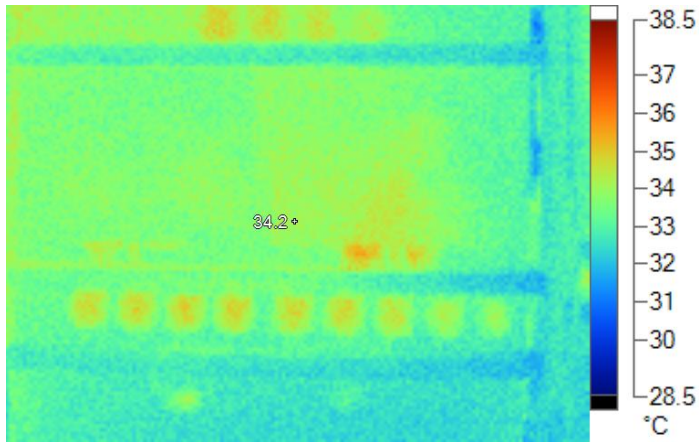
IR000024.IS2

**Image Info**

Transmission	1.00
Average Temperature	33.3°C
Image Range	30.2°C to 36.7°C
Camera Model	Ti9
Image Time	8/29/2011 9:01:39 AM
Calibration Range	-25.0°C to 125.0°C

Inspected By:

Inspection Date:	8/29/2011 9:01:49 AM	Location	
Equipment		Equipment Name:	
Ambient Air Temp:		Wind Speed	
Load (%)		Max Rated Load:	
Exception Temperature:		Potential Problem	
Recommended Action		Repair Priority:	
Emissivity:	0.95	Reflected Temperature:	22.0 °C
Camera Manufacturer	Fluke	Camera:	Ti9-11060227



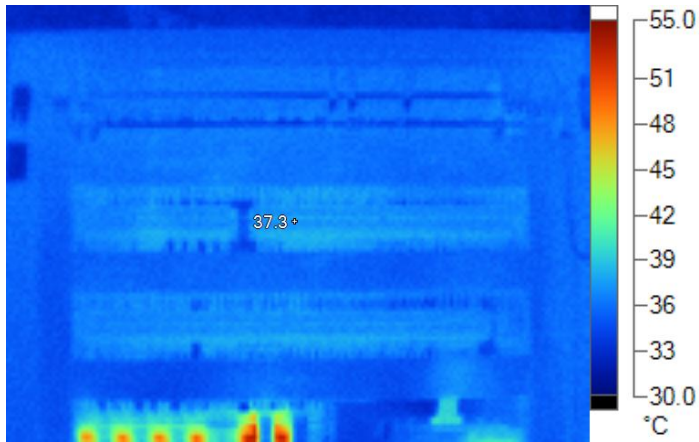
IR000025.IS2

**Image Info**

Transmission	1.00
Average Temperature	33.3°C
Image Range	30.8°C to 35.6°C
Camera Model	Ti9
Image Time	8/29/2011 9:01:49 AM
Calibration Range	-25.0°C to 125.0°C

Inspected By:

Inspection Date:	8/29/2011 9:03:03 AM	Location	
Equipment		Equipment Name:	
Ambient Air Temp:		Wind Speed	
Load (%)		Max Rated Load:	
Exception Temperature:		Potential Problem	
Recommended Action		Repair Priority:	
Emissivity:	0.95	Reflected Temperature:	22.0 °C
Camera Manufacturer	Fluke	Camera:	Ti9-11060227



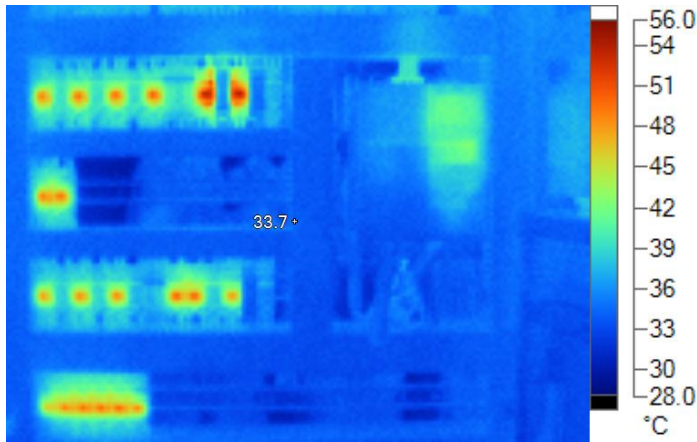
IR000026.IS2

**Image Info**

Transmission	1.00
Average Temperature	35.8°C
Image Range	31.1°C to 53.5°C
Camera Model	Ti9
Image Time	8/29/2011 9:03:03 AM
Calibration Range	-25.0°C to 125.0°C

Inspected By:

Inspection Date:	8/29/2011 9:03:11 AM	Location	
Equipment		Equipment Name:	
Ambient Air Temp:		Wind Speed	
Load (%)		Max Rated Load:	
Exception Temperature:		Potential Problem	
Recommended Action		Repair Priority:	
Emissivity:	0.95	Reflected Temperature:	22.0 °C
Camera Manufacturer	Fluke	Camera:	Ti9-11060227



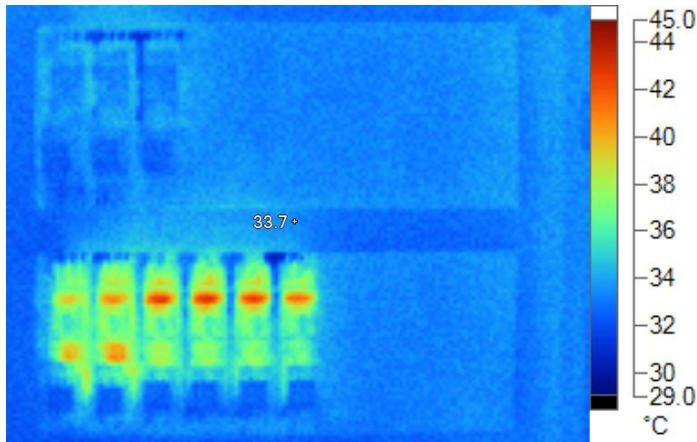
IR000027.IS2

**Image Info**

Transmission	1.00
Average Temperature	35.2°C
Image Range	29.4°C to 54.4°C
Camera Model	Ti9
Image Time	8/29/2011 9:03:11 AM
Calibration Range	-25.0°C to 125.0°C

Inspected By:

Inspection Date:	8/29/2011 9:03:19 AM	Location	
Equipment		Equipment Name:	
Ambient Air Temp:		Wind Speed	
Load (%)		Max Rated Load:	
Exception Temperature:		Potential Problem	
Recommended Action		Repair Priority:	
Emissivity:	0.95	Reflected Temperature:	22.0 °C
Camera Manufacturer	Fluke	Camera:	Ti9-11060227



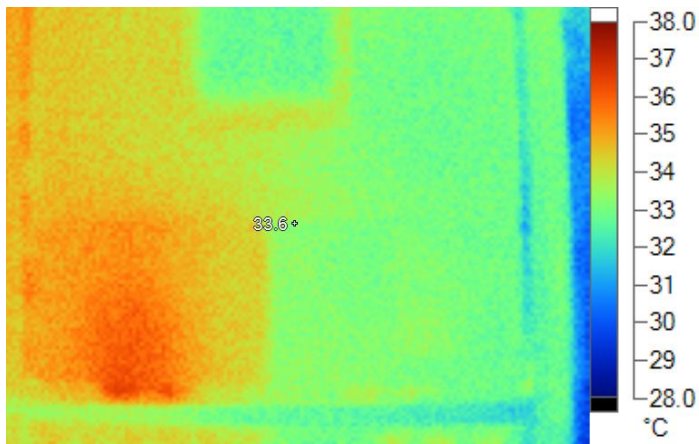
IR000028.IS2

**Image Info**

Transmission	1.00
Average Temperature	33.7°C
Image Range	30.2°C to 43.1°C
Camera Model	Ti9
Image Time	8/29/2011 9:03:19 AM
Calibration Range	-25.0°C to 125.0°C

Inspected By:

Inspection Date:	8/29/2011 9:03:53 AM	Location	
Equipment		Equipment Name:	
Ambient Air Temp:		Wind Speed	
Load (%)		Max Rated Load:	
Exception Temperature:		Potential Problem	
Recommended Action		Repair Priority:	
Emissivity:	0.95	Reflected Temperature:	22.0 °C
Camera Manufacturer	Fluke	Camera:	Ti9-11060227



IR000030.IS2

**Image Info**

Transmission	1.00
Average Temperature	33.6°C
Image Range	29.3°C to 36.6°C
Camera Model	Ti9
Image Time	8/29/2011 9:03:53 AM
Calibration Range	-25.0°C to 125.0°C