

**MP 124 Obilicev Venac Nis**

IDEA doo Beograd, Autoput za Zagreb 11a

## **RO Obilicev Venac**

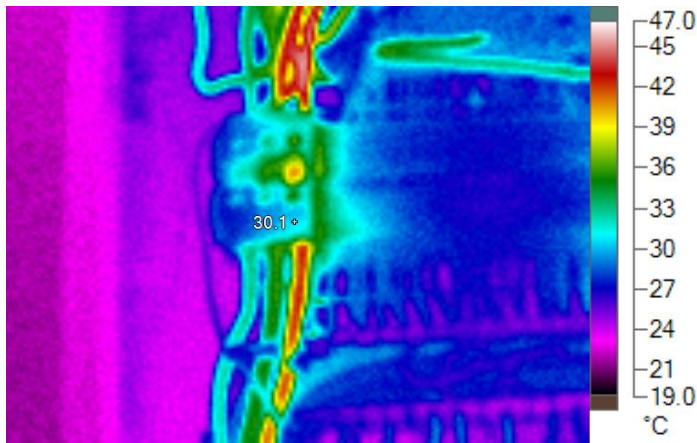
---

---

**Milan Kozomara**

Inspected By:

|                        |                      |                        |              |
|------------------------|----------------------|------------------------|--------------|
| Inspection Date:       | 5/23/2012 1:31:56 PM | Location               |              |
| Equipment              |                      | Equipment Name:        |              |
| Ambient Air Temp:      |                      | Wind Speed             |              |
| Load (%)               |                      | Max Rated Load:        |              |
| Exception Temperature: |                      | Potential Problem      |              |
| Recommended Action     |                      | Repair Priority:       |              |
| Emissivity:            | 0.95                 | Reflected Temperature: | 22.0 °C      |
| Camera Manufacturer    | Fluke                | Camera:                | Ti9-11060227 |



IR000912.IS2

### Image Info

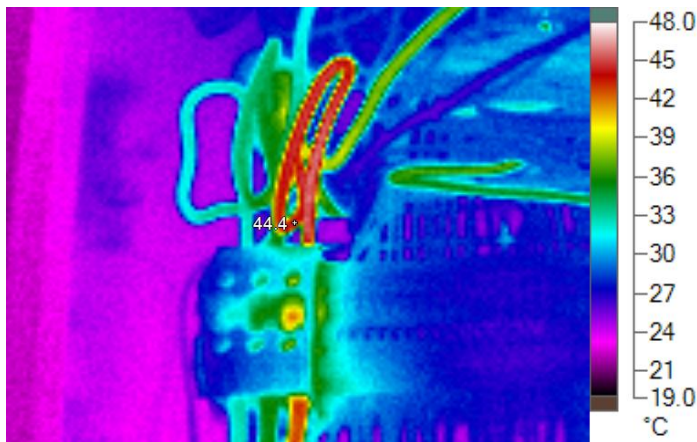
|                     |                      |
|---------------------|----------------------|
| Transmission        | 1.00                 |
| Average Temperature | 27.0°C               |
| Image Range         | 20.9°C to 45.5°C     |
| Camera Model        | Ti9                  |
| Image Time          | 5/23/2012 1:31:56 PM |
| Calibration Range   | -25.0°C to 125.0°C   |

### Main Image Markers

| Name        | Temperature | Emissivity | Background |
|-------------|-------------|------------|------------|
| Centerpoint | 30.1°C      | 0.95       | 22.0°C     |

Inspected By:

|                        |                      |                        |              |
|------------------------|----------------------|------------------------|--------------|
| Inspection Date:       | 5/23/2012 1:32:16 PM | Location               |              |
| Equipment              |                      | Equipment Name:        |              |
| Ambient Air Temp:      |                      | Wind Speed             |              |
| Load (%)               |                      | Max Rated Load:        |              |
| Exception Temperature: |                      | Potential Problem      |              |
| Recommended Action     |                      | Repair Priority:       |              |
| Emissivity:            | 0.95                 | Reflected Temperature: | 22.0 °C      |
| Camera Manufacturer    | Fluke                | Camera:                | Ti9-11060227 |



IR000913.IS2

### Image Info

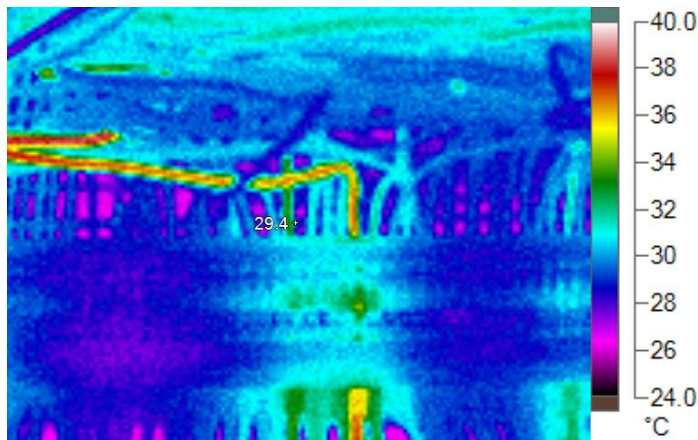
|                     |                      |
|---------------------|----------------------|
| Transmission        | 1.00                 |
| Average Temperature | 27.8°C               |
| Image Range         | 20.9°C to 46.0°C     |
| Camera Model        | Ti9                  |
| Image Time          | 5/23/2012 1:32:16 PM |
| Calibration Range   | -25.0°C to 125.0°C   |

### Main Image Markers

| Name        | Temperature | Emissivity | Background |
|-------------|-------------|------------|------------|
| Centerpoint | 44.4°C      | 0.95       | 22.0°C     |

Inspected By:

|                        |                      |                        |              |
|------------------------|----------------------|------------------------|--------------|
| Inspection Date:       | 5/23/2012 1:32:50 PM | Location               |              |
| Equipment              |                      | Equipment Name:        |              |
| Ambient Air Temp:      |                      | Wind Speed             |              |
| Load (%)               |                      | Max Rated Load:        |              |
| Exception Temperature: |                      | Potential Problem      |              |
| Recommended Action     |                      | Repair Priority:       |              |
| Emissivity:            | 0.95                 | Reflected Temperature: | 22.0 °C      |
| Camera Manufacturer    | Fluke                | Camera:                | Ti9-11060227 |



IR000914.IS2

### Image Info

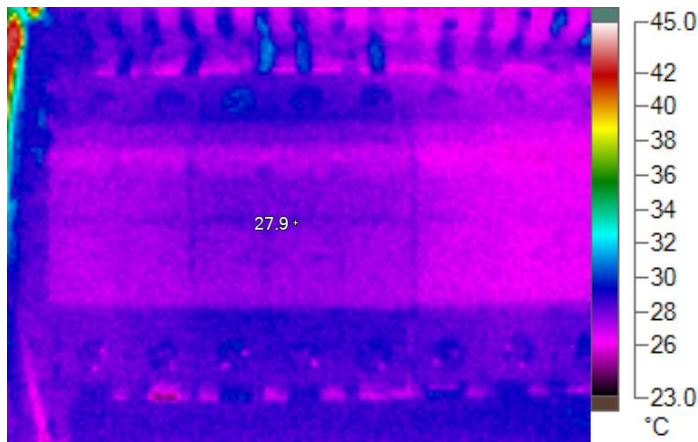
|                     |                      |
|---------------------|----------------------|
| Transmission        | 1.00                 |
| Average Temperature | 29.7°C               |
| Image Range         | 25.8°C to 38.7°C     |
| Camera Model        | Ti9                  |
| Image Time          | 5/23/2012 1:32:50 PM |
| Calibration Range   | -25.0°C to 125.0°C   |

### Main Image Markers

| Name        | Temperature | Emissivity | Background |
|-------------|-------------|------------|------------|
| Centerpoint | 29.4°C      | 0.95       | 22.0°C     |

Inspected By:

|                        |                      |                        |              |
|------------------------|----------------------|------------------------|--------------|
| Inspection Date:       | 5/23/2012 1:33:15 PM | Location               |              |
| Equipment              |                      | Equipment Name:        |              |
| Ambient Air Temp:      |                      | Wind Speed             |              |
| Load (%)               |                      | Max Rated Load:        |              |
| Exception Temperature: |                      | Potential Problem      |              |
| Recommended Action     |                      | Repair Priority:       |              |
| Emissivity:            | 0.95                 | Reflected Temperature: | 22.0 °C      |
| Camera Manufacturer    | Fluke                | Camera:                | Ti9-11060227 |



IR000915.IS2

### Image Info

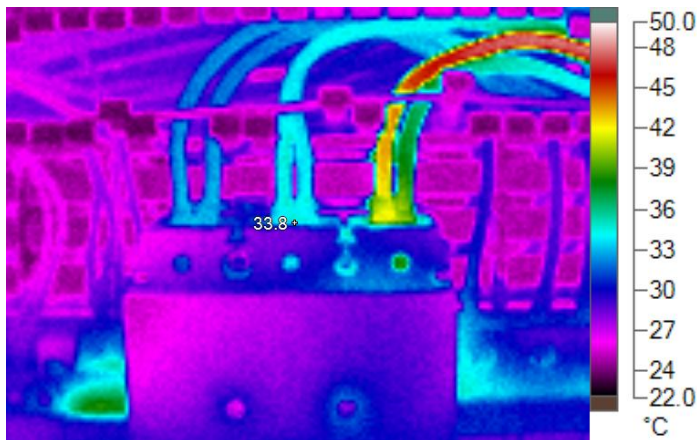
|                     |                      |
|---------------------|----------------------|
| Transmission        | 1.00                 |
| Average Temperature | 27.9°C               |
| Image Range         | 24.3°C to 43.1°C     |
| Camera Model        | Ti9                  |
| Image Time          | 5/23/2012 1:33:15 PM |
| Calibration Range   | -25.0°C to 125.0°C   |

### Main Image Markers

| Name        | Temperature | Emissivity | Background |
|-------------|-------------|------------|------------|
| Centerpoint | 27.9°C      | 0.95       | 22.0°C     |

Inspected By:

|                        |                      |                        |              |
|------------------------|----------------------|------------------------|--------------|
| Inspection Date:       | 5/23/2012 1:33:33 PM | Location               |              |
| Equipment              |                      | Equipment Name:        |              |
| Ambient Air Temp:      |                      | Wind Speed             |              |
| Load (%)               |                      | Max Rated Load:        |              |
| Exception Temperature: |                      | Potential Problem      |              |
| Recommended Action     |                      | Repair Priority:       |              |
| Emissivity:            | 0.95                 | Reflected Temperature: | 22.0 °C      |
| Camera Manufacturer    | Fluke                | Camera:                | Ti9-11060227 |



IR000916.IS2

### Image Info

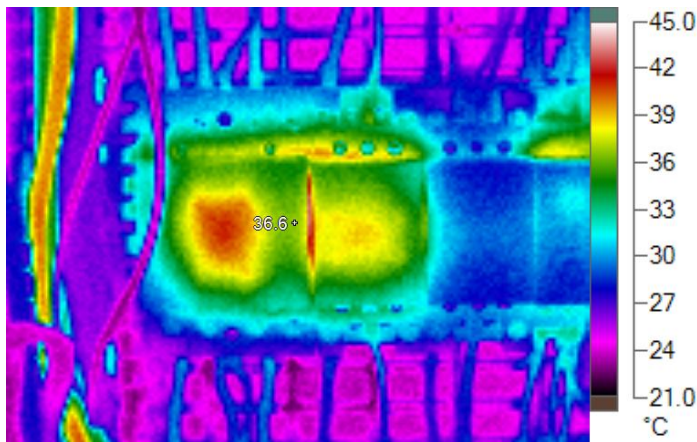
|                     |                      |
|---------------------|----------------------|
| Transmission        | 1.00                 |
| Average Temperature | 28.8°C               |
| Image Range         | 23.1°C to 48.1°C     |
| Camera Model        | Ti9                  |
| Image Time          | 5/23/2012 1:33:33 PM |
| Calibration Range   | -25.0°C to 125.0°C   |

### Main Image Markers

| Name        | Temperature | Emissivity | Background |
|-------------|-------------|------------|------------|
| Centerpoint | 33.8°C      | 0.95       | 22.0°C     |

Inspected By:

|                        |                      |                        |              |
|------------------------|----------------------|------------------------|--------------|
| Inspection Date:       | 5/23/2012 1:33:59 PM | Location               |              |
| Equipment              |                      | Equipment Name:        |              |
| Ambient Air Temp:      |                      | Wind Speed             |              |
| Load (%)               |                      | Max Rated Load:        |              |
| Exception Temperature: |                      | Potential Problem      |              |
| Recommended Action     |                      | Repair Priority:       |              |
| Emissivity:            | 0.95                 | Reflected Temperature: | 22.0 °C      |
| Camera Manufacturer    | Fluke                | Camera:                | Ti9-11060227 |



IR000917.IS2

### Image Info

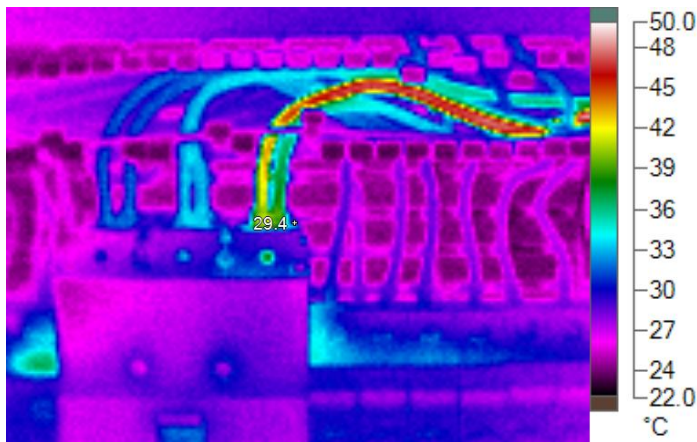
|                     |                      |
|---------------------|----------------------|
| Transmission        | 1.00                 |
| Average Temperature | 29.5°C               |
| Image Range         | 22.0°C to 43.2°C     |
| Camera Model        | Ti9                  |
| Image Time          | 5/23/2012 1:33:59 PM |
| Calibration Range   | -25.0°C to 125.0°C   |

### Main Image Markers

| Name        | Temperature | Emissivity | Background |
|-------------|-------------|------------|------------|
| Centerpoint | 36.6°C      | 0.95       | 22.0°C     |

Inspected By:

|                        |                      |                        |              |
|------------------------|----------------------|------------------------|--------------|
| Inspection Date:       | 5/23/2012 1:34:15 PM | Location               |              |
| Equipment              |                      | Equipment Name:        |              |
| Ambient Air Temp:      |                      | Wind Speed             |              |
| Load (%)               |                      | Max Rated Load:        |              |
| Exception Temperature: |                      | Potential Problem      |              |
| Recommended Action     |                      | Repair Priority:       |              |
| Emissivity:            | 0.95                 | Reflected Temperature: | 22.0 °C      |
| Camera Manufacturer    | Fluke                | Camera:                | Ti9-11060227 |



IR000918.IS2

### Image Info

|                     |                      |
|---------------------|----------------------|
| Transmission        | 1.00                 |
| Average Temperature | 28.2°C               |
| Image Range         | 23.0°C to 48.4°C     |
| Camera Model        | Ti9                  |
| Image Time          | 5/23/2012 1:34:15 PM |
| Calibration Range   | -25.0°C to 125.0°C   |

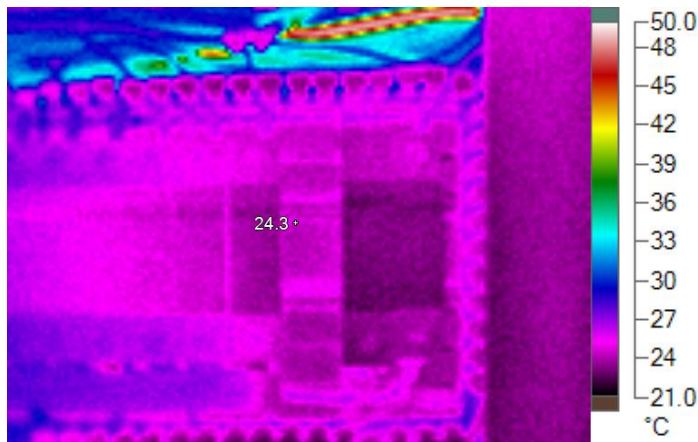
### Main Image Markers

| Name        | Temperature | Emissivity | Background |
|-------------|-------------|------------|------------|
| Centerpoint | 29.4°C      | 0.95       | 22.0°C     |



Inspected By:

|                        |                      |                        |              |
|------------------------|----------------------|------------------------|--------------|
| Inspection Date:       | 5/23/2012 1:34:46 PM | Location               |              |
| Equipment              |                      | Equipment Name:        |              |
| Ambient Air Temp:      |                      | Wind Speed             |              |
| Load (%)               |                      | Max Rated Load:        |              |
| Exception Temperature: |                      | Potential Problem      |              |
| Recommended Action     |                      | Repair Priority:       |              |
| Emissivity:            | 0.95                 | Reflected Temperature: | 22.0 °C      |
| Camera Manufacturer    | Fluke                | Camera:                | Ti9-11060227 |



IR000919.IS2

### Image Info

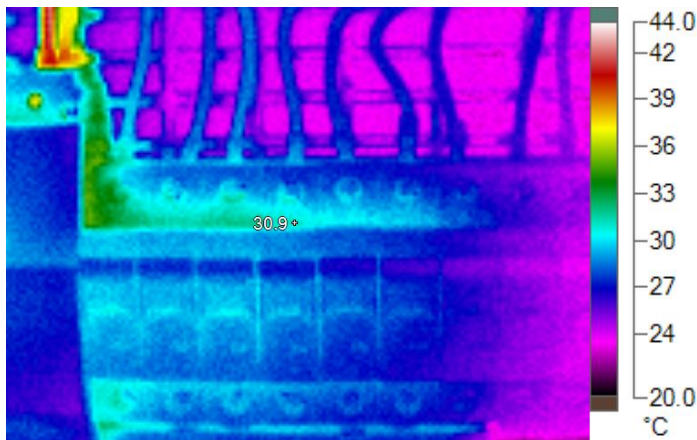
|                     |                      |
|---------------------|----------------------|
| Transmission        | 1.00                 |
| Average Temperature | 25.7°C               |
| Image Range         | 22.1°C to 48.8°C     |
| Camera Model        | Ti9                  |
| Image Time          | 5/23/2012 1:34:46 PM |
| Calibration Range   | -25.0°C to 125.0°C   |

### Main Image Markers

| Name        | Temperature | Emissivity | Background |
|-------------|-------------|------------|------------|
| Centerpoint | 24.3°C      | 0.95       | 22.0°C     |

Inspected By:

|                        |                      |                        |              |
|------------------------|----------------------|------------------------|--------------|
| Inspection Date:       | 5/23/2012 1:35:06 PM | Location               |              |
| Equipment              |                      | Equipment Name:        |              |
| Ambient Air Temp:      |                      | Wind Speed             |              |
| Load (%)               |                      | Max Rated Load:        |              |
| Exception Temperature: |                      | Potential Problem      |              |
| Recommended Action     |                      | Repair Priority:       |              |
| Emissivity:            | 0.95                 | Reflected Temperature: | 22.0 °C      |
| Camera Manufacturer    | Fluke                | Camera:                | Ti9-11060227 |



IR000920.IS2

### Image Info

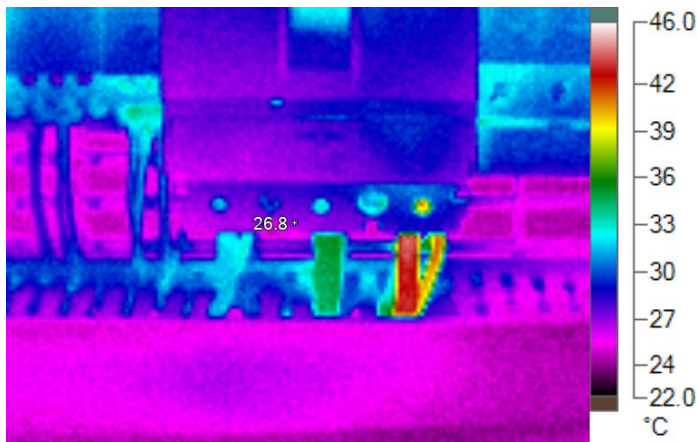
|                     |                      |
|---------------------|----------------------|
| Transmission        | 1.00                 |
| Average Temperature | 27.2°C               |
| Image Range         | 21.8°C to 42.2°C     |
| Camera Model        | Ti9                  |
| Image Time          | 5/23/2012 1:35:06 PM |
| Calibration Range   | -25.0°C to 125.0°C   |

### Main Image Markers

| Name        | Temperature | Emissivity | Background |
|-------------|-------------|------------|------------|
| Centerpoint | 30.9°C      | 0.95       | 22.0°C     |

Inspected By:

|                        |                      |                        |              |
|------------------------|----------------------|------------------------|--------------|
| Inspection Date:       | 5/23/2012 1:35:29 PM | Location               |              |
| Equipment              |                      | Equipment Name:        |              |
| Ambient Air Temp:      |                      | Wind Speed             |              |
| Load (%)               |                      | Max Rated Load:        |              |
| Exception Temperature: |                      | Potential Problem      |              |
| Recommended Action     |                      | Repair Priority:       |              |
| Emissivity:            | 0.95                 | Reflected Temperature: | 22.0 °C      |
| Camera Manufacturer    | Fluke                | Camera:                | Ti9-11060227 |



IR000921.IS2

### Image Info

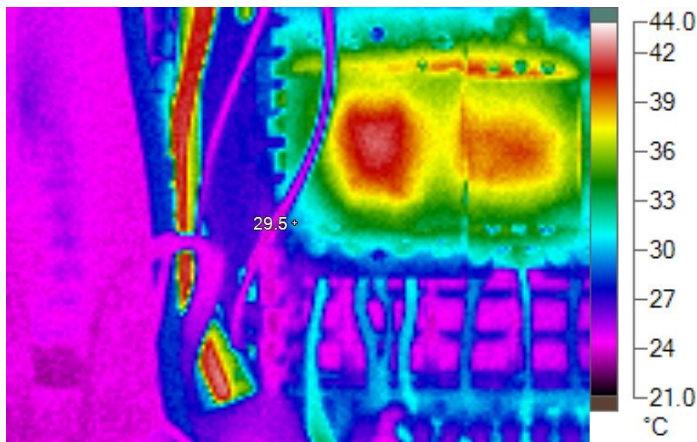
|                     |                      |
|---------------------|----------------------|
| Transmission        | 1.00                 |
| Average Temperature | 27.7°C               |
| Image Range         | 23.5°C to 44.3°C     |
| Camera Model        | Ti9                  |
| Image Time          | 5/23/2012 1:35:29 PM |
| Calibration Range   | -25.0°C to 125.0°C   |

### Main Image Markers

| Name        | Temperature | Emissivity | Background |
|-------------|-------------|------------|------------|
| Centerpoint | 26.8°C      | 0.95       | 22.0°C     |

Inspected By:

|                        |                      |                        |              |
|------------------------|----------------------|------------------------|--------------|
| Inspection Date:       | 5/23/2012 1:35:44 PM | Location               |              |
| Equipment              |                      | Equipment Name:        |              |
| Ambient Air Temp:      |                      | Wind Speed             |              |
| Load (%)               |                      | Max Rated Load:        |              |
| Exception Temperature: |                      | Potential Problem      |              |
| Recommended Action     |                      | Repair Priority:       |              |
| Emissivity:            | 0.95                 | Reflected Temperature: | 22.0 °C      |
| Camera Manufacturer    | Fluke                | Camera:                | Ti9-11060227 |



IR000922.IS2

### Image Info

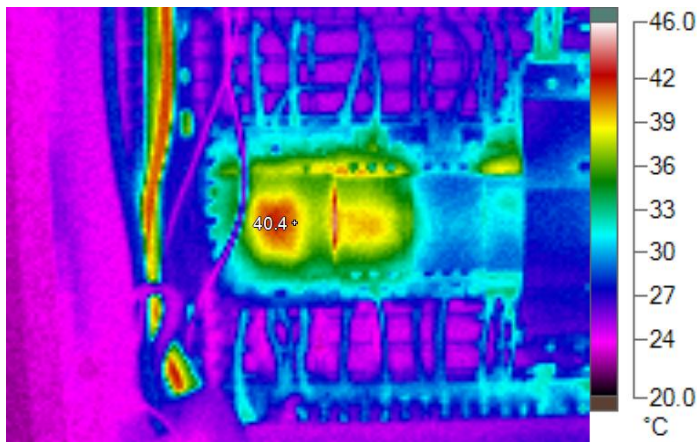
|                     |                      |
|---------------------|----------------------|
| Transmission        | 1.00                 |
| Average Temperature | 29.2°C               |
| Image Range         | 22.8°C to 42.6°C     |
| Camera Model        | Ti9                  |
| Image Time          | 5/23/2012 1:35:44 PM |
| Calibration Range   | -25.0°C to 125.0°C   |

### Main Image Markers

| Name        | Temperature | Emissivity | Background |
|-------------|-------------|------------|------------|
| Centerpoint | 29.5°C      | 0.95       | 22.0°C     |

Inspected By:

|                        |                      |                        |              |
|------------------------|----------------------|------------------------|--------------|
| Inspection Date:       | 5/23/2012 1:36:03 PM | Location               |              |
| Equipment              |                      | Equipment Name:        |              |
| Ambient Air Temp:      |                      | Wind Speed             |              |
| Load (%)               |                      | Max Rated Load:        |              |
| Exception Temperature: |                      | Potential Problem      |              |
| Recommended Action     |                      | Repair Priority:       |              |
| Emissivity:            | 0.95                 | Reflected Temperature: | 22.0 °C      |
| Camera Manufacturer    | Fluke                | Camera:                | Ti9-11060227 |



IR000923.IS2

### Image Info

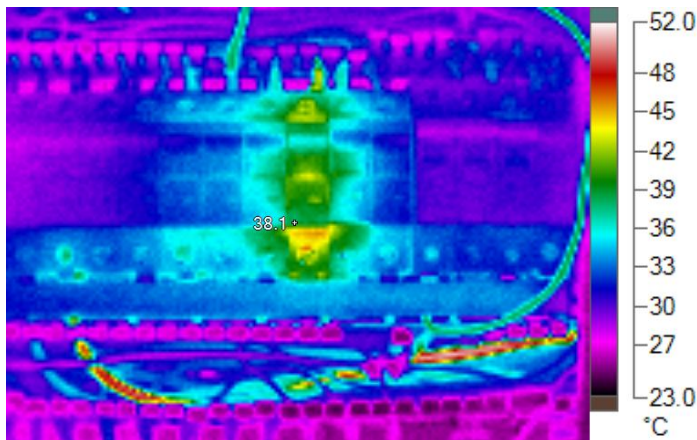
|                     |                      |
|---------------------|----------------------|
| Transmission        | 1.00                 |
| Average Temperature | 28.0°C               |
| Image Range         | 21.9°C to 44.3°C     |
| Camera Model        | Ti9                  |
| Image Time          | 5/23/2012 1:36:03 PM |
| Calibration Range   | -25.0°C to 125.0°C   |

### Main Image Markers

| Name        | Temperature | Emissivity | Background |
|-------------|-------------|------------|------------|
| Centerpoint | 40.4°C      | 0.95       | 22.0°C     |

Inspected By:

|                        |                      |                        |              |
|------------------------|----------------------|------------------------|--------------|
| Inspection Date:       | 5/23/2012 1:36:23 PM | Location               |              |
| Equipment              |                      | Equipment Name:        |              |
| Ambient Air Temp:      |                      | Wind Speed             |              |
| Load (%)               |                      | Max Rated Load:        |              |
| Exception Temperature: |                      | Potential Problem      |              |
| Recommended Action     |                      | Repair Priority:       |              |
| Emissivity:            | 0.95                 | Reflected Temperature: | 22.0 °C      |
| Camera Manufacturer    | Fluke                | Camera:                | Ti9-11060227 |



IR000924.IS2

### Image Info

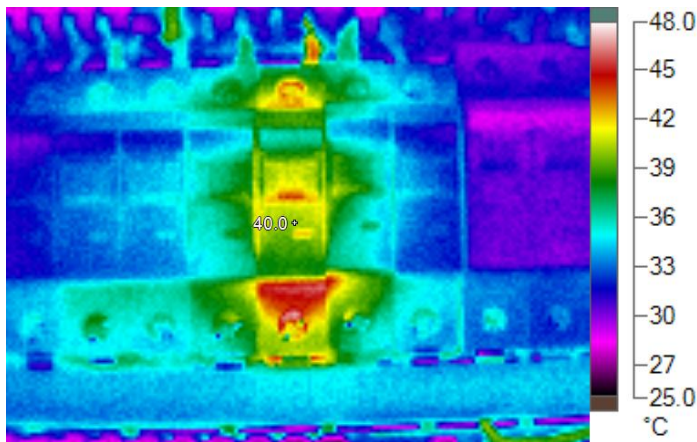
|                     |                      |
|---------------------|----------------------|
| Transmission        | 1.00                 |
| Average Temperature | 31.6°C               |
| Image Range         | 24.2°C to 51.0°C     |
| Camera Model        | Ti9                  |
| Image Time          | 5/23/2012 1:36:23 PM |
| Calibration Range   | -25.0°C to 125.0°C   |

### Main Image Markers

| Name        | Temperature | Emissivity | Background |
|-------------|-------------|------------|------------|
| Centerpoint | 38.1°C      | 0.95       | 22.0°C     |

Inspected By:

|                        |                      |                        |              |
|------------------------|----------------------|------------------------|--------------|
| Inspection Date:       | 5/23/2012 1:37:16 PM | Location               |              |
| Equipment              |                      | Equipment Name:        |              |
| Ambient Air Temp:      |                      | Wind Speed             |              |
| Load (%)               |                      | Max Rated Load:        |              |
| Exception Temperature: |                      | Potential Problem      |              |
| Recommended Action     |                      | Repair Priority:       |              |
| Emissivity:            | 0.95                 | Reflected Temperature: | 22.0 °C      |
| Camera Manufacturer    | Fluke                | Camera:                | Ti9-11060227 |



IR000925.IS2

### Image Info

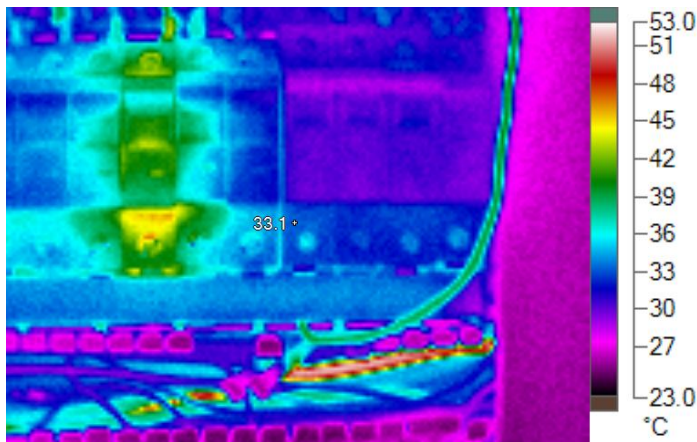
|                     |                      |
|---------------------|----------------------|
| Transmission        | 1.00                 |
| Average Temperature | 34.0°C               |
| Image Range         | 26.4°C to 46.9°C     |
| Camera Model        | Ti9                  |
| Image Time          | 5/23/2012 1:37:16 PM |
| Calibration Range   | -25.0°C to 125.0°C   |

### Main Image Markers

| Name        | Temperature | Emissivity | Background |
|-------------|-------------|------------|------------|
| Centerpoint | 40.0°C      | 0.95       | 22.0°C     |

Inspected By:

|                        |                      |                        |              |
|------------------------|----------------------|------------------------|--------------|
| Inspection Date:       | 5/23/2012 1:38:06 PM | Location               |              |
| Equipment              |                      | Equipment Name:        |              |
| Ambient Air Temp:      |                      | Wind Speed             |              |
| Load (%)               |                      | Max Rated Load:        |              |
| Exception Temperature: |                      | Potential Problem      |              |
| Recommended Action     |                      | Repair Priority:       |              |
| Emissivity:            | 0.95                 | Reflected Temperature: | 22.0 °C      |
| Camera Manufacturer    | Fluke                | Camera:                | Ti9-11060227 |



IR000926.IS2

### Image Info

|                     |                      |
|---------------------|----------------------|
| Transmission        | 1.00                 |
| Average Temperature | 32.2°C               |
| Image Range         | 24.2°C to 51.9°C     |
| Camera Model        | Ti9                  |
| Image Time          | 5/23/2012 1:38:06 PM |
| Calibration Range   | -25.0°C to 125.0°C   |

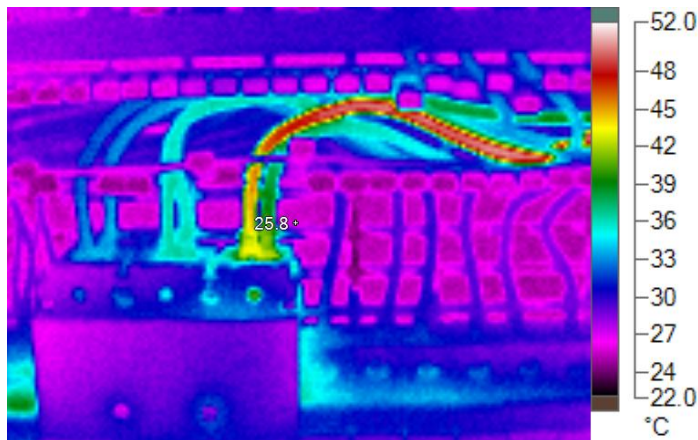
### Main Image Markers

| Name        | Temperature | Emissivity | Background |
|-------------|-------------|------------|------------|
| Centerpoint | 33.1°C      | 0.95       | 22.0°C     |



Inspected By:

|                        |                      |                        |              |
|------------------------|----------------------|------------------------|--------------|
| Inspection Date:       | 5/23/2012 1:38:27 PM | Location               |              |
| Equipment              |                      | Equipment Name:        |              |
| Ambient Air Temp:      |                      | Wind Speed             |              |
| Load (%)               |                      | Max Rated Load:        |              |
| Exception Temperature: |                      | Potential Problem      |              |
| Recommended Action     |                      | Repair Priority:       |              |
| Emissivity:            | 0.95                 | Reflected Temperature: | 22.0 °C      |
| Camera Manufacturer    | Fluke                | Camera:                | Ti9-11060227 |



IR000927.IS2

### Image Info

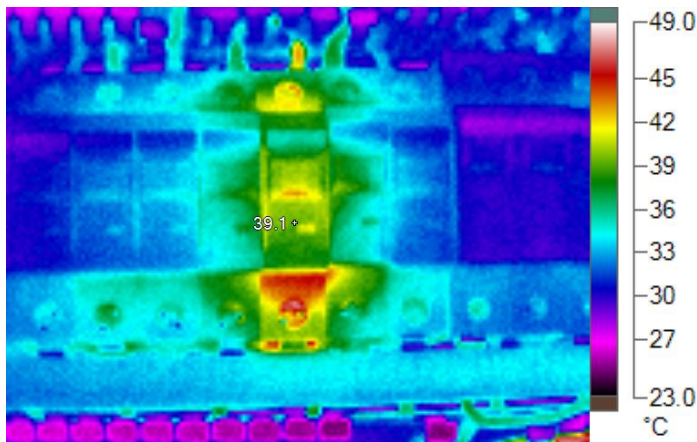
|                     |                      |
|---------------------|----------------------|
| Transmission        | 1.00                 |
| Average Temperature | 29.8°C               |
| Image Range         | 23.1°C to 50.3°C     |
| Camera Model        | Ti9                  |
| Image Time          | 5/23/2012 1:38:27 PM |
| Calibration Range   | -25.0°C to 125.0°C   |

### Main Image Markers

| Name        | Temperature | Emissivity | Background |
|-------------|-------------|------------|------------|
| Centerpoint | 25.8°C      | 0.95       | 22.0°C     |

Inspected By:

|                        |                      |                        |              |
|------------------------|----------------------|------------------------|--------------|
| Inspection Date:       | 5/23/2012 1:42:26 PM | Location               |              |
| Equipment              |                      | Equipment Name:        |              |
| Ambient Air Temp:      |                      | Wind Speed             |              |
| Load (%)               |                      | Max Rated Load:        |              |
| Exception Temperature: |                      | Potential Problem      |              |
| Recommended Action     |                      | Repair Priority:       |              |
| Emissivity:            | 0.95                 | Reflected Temperature: | 22.0 °C      |
| Camera Manufacturer    | Fluke                | Camera:                | Ti9-11060227 |



IR000928.IS2

### Image Info

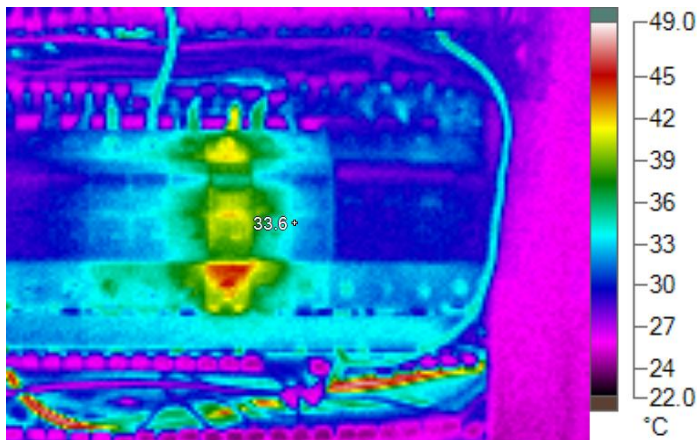
|                     |                      |
|---------------------|----------------------|
| Transmission        | 1.00                 |
| Average Temperature | 33.0°C               |
| Image Range         | 24.4°C to 47.3°C     |
| Camera Model        | Ti9                  |
| Image Time          | 5/23/2012 1:42:26 PM |
| Calibration Range   | -25.0°C to 125.0°C   |

### Main Image Markers

| Name        | Temperature | Emissivity | Background |
|-------------|-------------|------------|------------|
| Centerpoint | 39.1°C      | 0.95       | 22.0°C     |

Inspected By:

|                        |                      |                        |              |
|------------------------|----------------------|------------------------|--------------|
| Inspection Date:       | 5/23/2012 1:42:48 PM | Location               |              |
| Equipment              |                      | Equipment Name:        |              |
| Ambient Air Temp:      |                      | Wind Speed             |              |
| Load (%)               |                      | Max Rated Load:        |              |
| Exception Temperature: |                      | Potential Problem      |              |
| Recommended Action     |                      | Repair Priority:       |              |
| Emissivity:            | 0.95                 | Reflected Temperature: | 22.0 °C      |
| Camera Manufacturer    | Fluke                | Camera:                | Ti9-11060227 |



IR000929.IS2

### Image Info

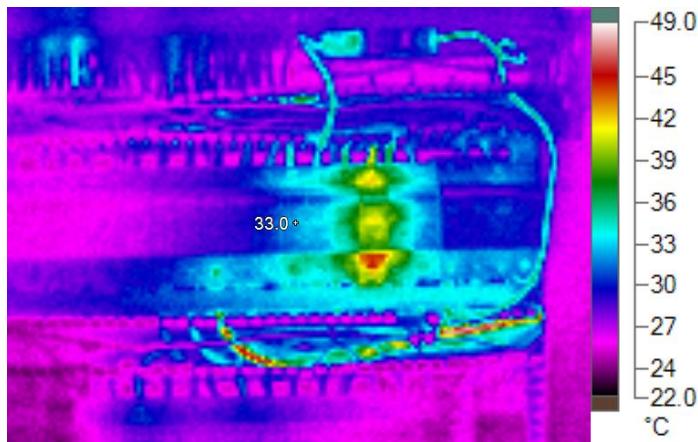
|                     |                      |
|---------------------|----------------------|
| Transmission        | 1.00                 |
| Average Temperature | 30.5°C               |
| Image Range         | 23.7°C to 47.8°C     |
| Camera Model        | Ti9                  |
| Image Time          | 5/23/2012 1:42:48 PM |
| Calibration Range   | -25.0°C to 125.0°C   |

### Main Image Markers

| Name        | Temperature | Emissivity | Background |
|-------------|-------------|------------|------------|
| Centerpoint | 33.6°C      | 0.95       | 22.0°C     |

Inspected By:

|                        |                      |                        |              |
|------------------------|----------------------|------------------------|--------------|
| Inspection Date:       | 5/23/2012 1:43:29 PM | Location               |              |
| Equipment              |                      | Equipment Name:        |              |
| Ambient Air Temp:      |                      | Wind Speed             |              |
| Load (%)               |                      | Max Rated Load:        |              |
| Exception Temperature: |                      | Potential Problem      |              |
| Recommended Action     |                      | Repair Priority:       |              |
| Emissivity:            | 0.95                 | Reflected Temperature: | 22.0 °C      |
| Camera Manufacturer    | Fluke                | Camera:                | Ti9-11060227 |



IR000930.IS2

### Image Info

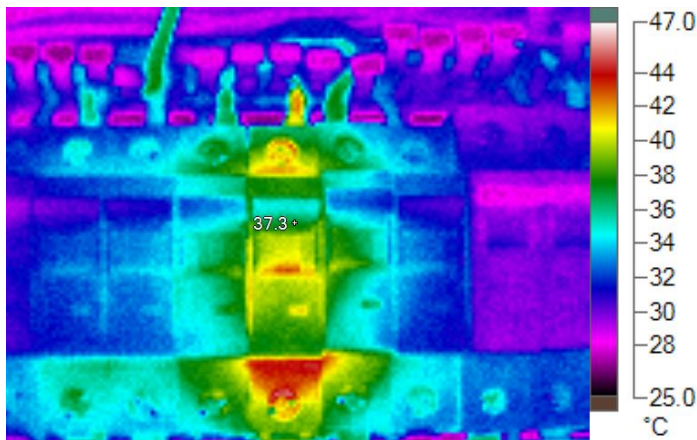
|                     |                      |
|---------------------|----------------------|
| Transmission        | 1.00                 |
| Average Temperature | 28.9°C               |
| Image Range         | 23.4°C to 47.8°C     |
| Camera Model        | Ti9                  |
| Image Time          | 5/23/2012 1:43:29 PM |
| Calibration Range   | -25.0°C to 125.0°C   |

### Main Image Markers

| Name        | Temperature | Emissivity | Background |
|-------------|-------------|------------|------------|
| Centerpoint | 33.0°C      | 0.95       | 22.0°C     |

Inspected By:

|                        |                      |                        |              |
|------------------------|----------------------|------------------------|--------------|
| Inspection Date:       | 5/23/2012 1:46:11 PM | Location               |              |
| Equipment              |                      | Equipment Name:        |              |
| Ambient Air Temp:      |                      | Wind Speed             |              |
| Load (%)               |                      | Max Rated Load:        |              |
| Exception Temperature: |                      | Potential Problem      |              |
| Recommended Action     |                      | Repair Priority:       |              |
| Emissivity:            | 0.95                 | Reflected Temperature: | 22.0 °C      |
| Camera Manufacturer    | Fluke                | Camera:                | Ti9-11060227 |



IR000931.IS2

### Image Info

|                     |                      |
|---------------------|----------------------|
| Transmission        | 1.00                 |
| Average Temperature | 33.0°C               |
| Image Range         | 26.3°C to 45.3°C     |
| Camera Model        | Ti9                  |
| Image Time          | 5/23/2012 1:46:11 PM |
| Calibration Range   | -25.0°C to 125.0°C   |

### Main Image Markers

| Name        | Temperature | Emissivity | Background |
|-------------|-------------|------------|------------|
| Centerpoint | 37.3°C      | 0.95       | 22.0°C     |